

marantz®



AMP 10

Technical Specifications



Inputs/Outputs		
Audio	Main Amplifier In	Balanced & Unbalanced: 16ch (Exclusive use by a selector switch)
Other	Speaker Terminal: Gold-Plated / Regular Screw	Brass type (same as MODEL 40n)
	Number of Speaker Terminals	16
	Bi-Amp Drive / BTL Drive	Yes / Yes
	Level Meter	Yes
Features		
	Number of Channels	16
	HDAM Topology	Input and Driver Stage
	Power supply: Input section	Toroidal Transformer
	Power supply: Output section	High Current SMPS
	High Grade Audio Components	Yes
	Customised Components	Yes
	Copper Plated Chassis	Yes
	Double Layer Bottom Plate	Yes
	Extensive Shielding	Yes
Control		
	RS232 Control / Amp Control	Yes / Yes
	IR Flasher In	Yes
	Marantz Remote Bus	Yes
	DC Trigger Input / Output	1 / 1

Specifications	
Number of Power Amps	16
Power Output (8 ohm, 1 kHz, 0.05% 2ch Drive) Normal / BTL	200W / 400W
Power Output (4 ohm, 1 kHz, 0.7% 2ch Drive) Normal	400W
Power Output (8 ohm, 1 kHz, 0.7% 5ch Drive) Normal	200W
General	
Front Display	Level Meter
Firmware Update by Network / USB / RS232C	No / No / Yes
Auto Power Off	Yes
Metal Front Panel	Yes
Power Consumption	500W
Power Consumption, No-Sound (ECO on / off)	140W
Standby Consumption	0.2W
Maximum Dimensions (W x D x H)	443 x 489 x 189mm
Weight	19.8kg
EAN Code	0747192137526
What's in the Box	Main unit, quick start guide, AC cord, amp control cable, remote control cable, SP terminal wrench



16-Channel Home Theatre Amplifier

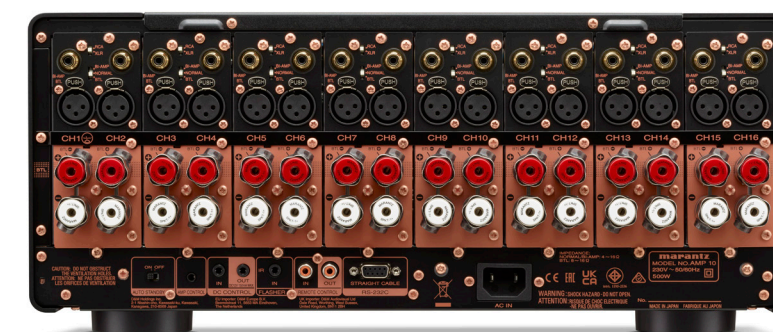
Reference 16-channel 200-watt-per-channel amplifier. Marantz HDAM, Class D amplification, and balanced line-level inputs. Pair with AV 10 to create an elite-level home theatre.

- Detailed and immersive sound transforms your listening room
- Beautiful design matches rich, warm sound
- 200 watts per channel into 8Ω, 400 watts per channel into 4Ω
- 16 channels powers even the largest home theatres
- Bi-amp mode drives high and low frequency sections of loudspeakers with separate amps
- Bridge mode combines two channels into a single 400-watt channel into 8Ω
- Perfect match for Marantz AV 10 processor
- Balanced XLR input is ideal for reducing input noise
- Stunning analogue meter indicates output
- Soft side lights cast a warm glow on the front surface of the amplifier



The Most Musical Sound

Sound United
A Division of D&M Europe B.V.
P.O. Box 8744
5605 LS Eindhoven
The Netherlands



Design and specifications are subject to change by Marantz without notice.

www.marantz.com